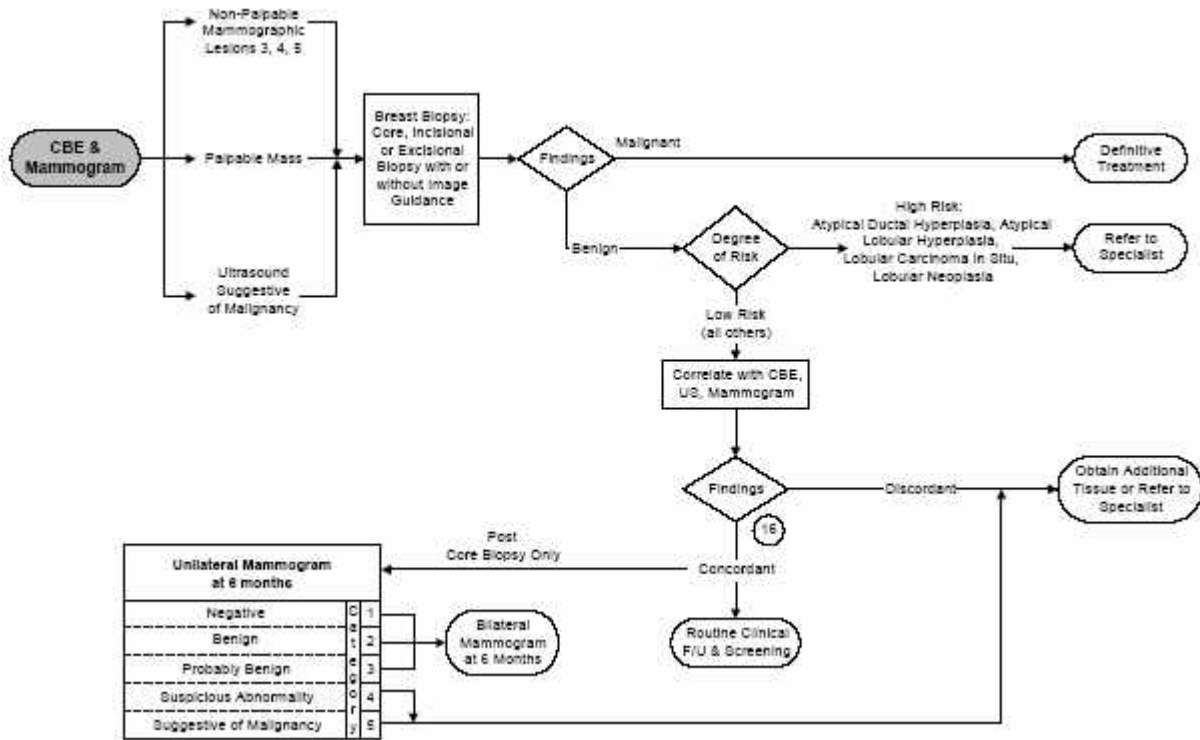


# Algoritmo per il comportamento da tenere in seguito ad una risposta istologica

Clinical Breast Protocols Workgroup  
 May 2000 Revised Second Edition  
 California Department of Health Services, Cancer Detection Section  
 Publisher: University of California – Davis  
[www.sdsu.edu/qap](http://www.sdsu.edu/qap)



note all' algoritmo

- 16 Mammography can be performed using a radiopaque marker on the skin over a palpable lesion to help determine if the lesion corresponds to the mammographic lesion. A non-corresponding mammographic finding may represent a separate lesion that needs further work-up.